



Unloading



Care should be taken when unloading your table as not to damage it by collisions with the lift or objects in the area. Position your forks slightly left of center under the table on the side without the track. Fork extensions are highly recommended. Lift taking notice that the load is even, if the table is heavy to one side reposition the lift. Place the table in its area.

Unpacking



Your Boss Plasma table will come securely shrink wrapped and safe from the elements. Care should be taken when opening the wrap. Use short mindful cuts opening while checking for wires and avoiding scratching or marring. Special care needs to be taken on the track side of the table due to the presence of many wires.



Once the wrapping is off, everything you need will be on the bed of the table. With the aid of a helper begin removing the items, setting them in a safe spot.

Lower the control cabinet and position it in a workable area near the table.

NOTE contact Boss Tables immediately if any damage to your table has occurred.

Leveling





Using a level, check all sides. Make necessary adjustments to the feet with a 9/16" wrench to make the table level.

Filling the table



Make sure the valves on the end of the table are open to allow air to bleed out when filling. Under the table, check that the valve is in the horizontal (closed) position.



Begin filling the table from a water source. Occasionally checking water levels. Depending on your water supply this may take several hours to complete. With the aid of a flashlight water levels should be even with the edge of the tank. At this point water can be turned off. Begin adding the Boss Quench Additive. Use both 5 gallon pails.



With the end cover removed you can see the tank bend. Fill water level even to this.

Installing hardware



Your monitor will come prewired. Mounting screws will be in the back of the monitor. Simply attach to the mount.



Mount the computer to the computer holder on the side of the cabinet. Unpack and attach the mouse and keyboard and plug into the computer.

WHC ONLY

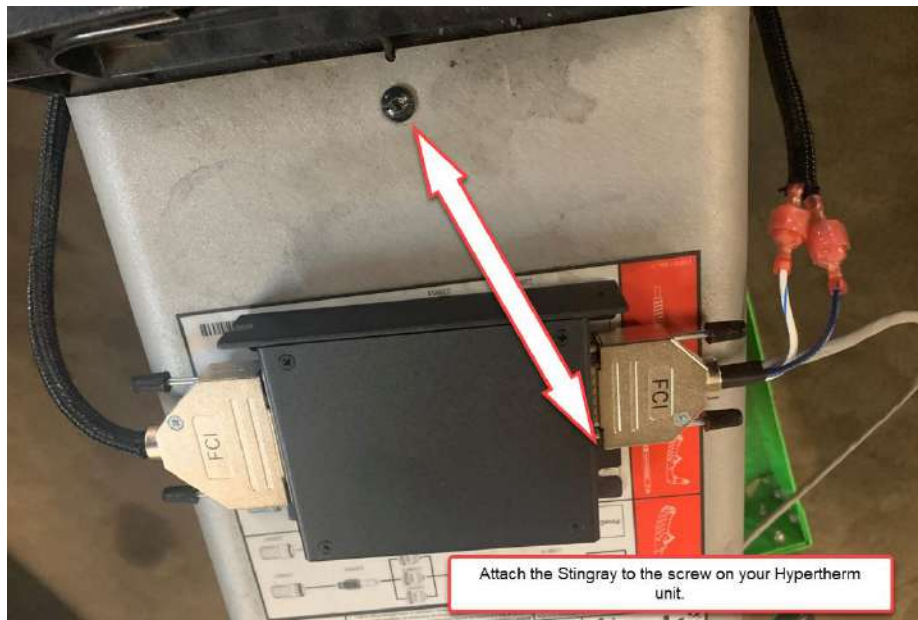
Plug the serial cable into the controller and then into the serial port located on the back of the power unit.



Plug the USB cable into the computer and into the controller.

PRO ONLY

Plug on the Stingray module to the wire coming from the table. There are 2 wires that will plug in to the loom. Match the colors when connecting. The serial plug will plug into the module then the power unit.



Plug the USB cable from the controller box into the computer.



The large red toggle is the power button. The smaller silver toggle is the controllers on/off.





Plug the torch lead from the table into the power unit.



Plug the ground into the twist lock port on the power unit.



Ground the table to the slates from the power unit.



Insert supplied rollers into the holes along the rails.

Finishing Up

Connect regulated 120 psi MAX air supply to the table and power unit. Follow your power units recommended psi. Connect cabinet outlet to a 110v outlet. If your power unit is using 3 phase power, you can add the plug to the cord and plug in. If you are using single phase an easy modification must be done. Follow the instructions from the manufacturers manual to make this change.

Z Axis Track and Scribe Hoses Install

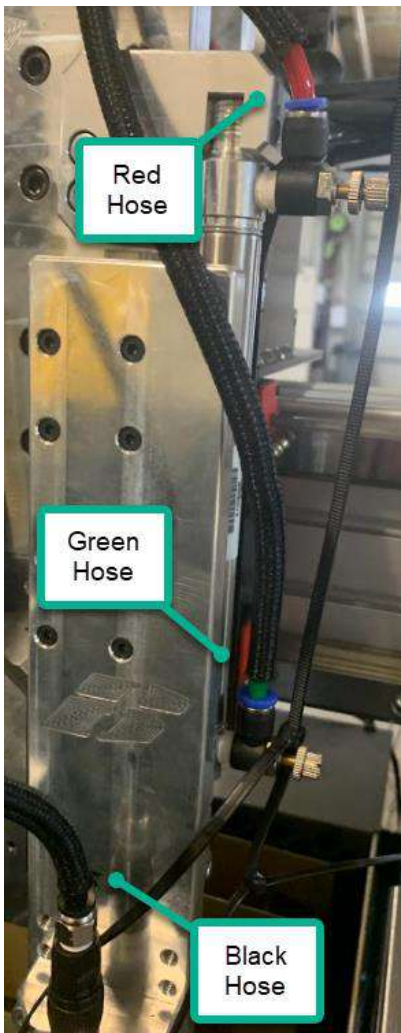
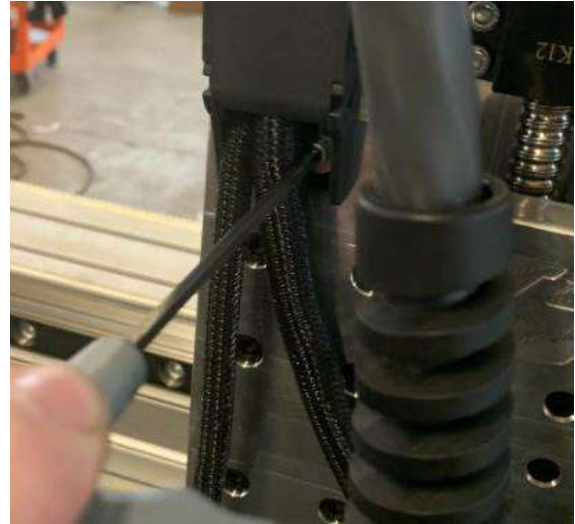
Boss Tables ships their tables with the Z Axis tracks partially removed to prevent breakage. A 9/64" allen wrench is needed to fasten the tracks back to the Z Axis.



The screws to secure the track will be in their respective holes on the Z Axis plate. Two screws are needed to secure the track. If an optional scribe is installed the screws for the scribe track will be on the opposite side in their holes.



Using a 9/64" allen wrench
fasten the track to the Z
Axis.



Install the hoses on the optional
scribe as shown. The hoses are a
slip fit coupler, so simply slide the
hose into its fitting in the proper
color orientation.



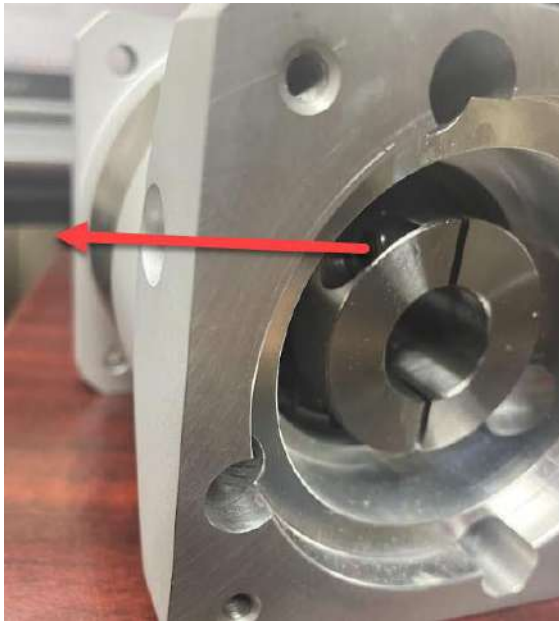
Once completed your Z Axis will resemble this.

Motor Installation

6x12 and larger

Locate the motors in the packaging and unwrap.

The gear box is already fastened to the gantry system. Move the gantry so that the set screw for the motor shaft is aligned with the access hole. Loosen the set screw and remove the 4 screws that hold the motor on.



On the bottom of the gantry remove the 4 3/8" bolts holding the cover on. Slide the motor into the gear box and fasten the motor using the 4 supplied screws you took out of the gear box.

Next, remove the plug for the alignment hole and tighten the shaft to the gear box and connect the wires. Install the gantry cover.

